

Fox Chase Facts

- **A national leader:** Fox Chase is consistently ranked among the best cancer-care facilities in the nation by *U.S. News & World Report*.
- **Distinguished scientists:** The Center's researchers have won the highest awards in their fields, including two Nobel Prizes.
- **Top doctors:** Fox Chase physicians are routinely recognized in national "Top Doctors" listings.
- **Excellence in nursing:** The Center's nursing program has received the Magnet status for excellence, the highest award from the American Nurses Credentialing Center. Fox Chase was the first cancer center to earn the status.
- **A prestigious recognition:** In 1974, Fox Chase became one of the first National Cancer Institute-designated comprehensive cancer centers. The prestigious designation recognizes excellence in both research and clinical care.

Cutting-edge research
Compassionate care
The treatments of tomorrow — today

fighting
cancer
together

Fox Chase Cancer Center at a Glance

- **Who?** The best minds in science and medicine work together at Fox Chase to advance cancer prevention, detection, and treatment.
- **What?** Fox Chase is a federally designated comprehensive cancer center that conducts cutting-edge research and provides compassionate care to patients.
- **When?** Cancer patients have been turning to Fox Chase for more than a century. The Center was founded in 1904 as one of the nation's first cancer hospitals.
- **Where?** Fox Chase is located in northeast Philadelphia.
- **Why?** The goal of Fox Chase is to save lives and reduce the suffering caused by cancer.

At Fox Chase, our goal is to save lives and reduce the suffering caused by cancer.



FOX CHASE CANCER CENTER

333 Cottman Avenue
Philadelphia, Pennsylvania 19111-2497
1-888-FOX CHASE (1-888-369-2427)

Visit us online at www.fccc.edu.

For information on supporting Fox Chase, call 215-728-2745 or visit www.fccc.edu/helpingFoxChase.



Everyone at Fox Chase—from our pioneering scientists to our expert doctors and nurses—shares a passion for helping people with cancer.

The best minds in science and medicine—working together

Fox Chase Cancer Center is a national leader in cancer research and treatment. At Fox Chase, the best minds in science and medicine work together to develop new therapies, as well as detection and prevention strategies—all to ensure that our patients receive the best care possible.

Cancer touches us all. More than 10 million Americans are living with cancer or have survived it. But chances are that you don't need statistics to understand cancer's impact. Chances are that you have a personal story about cancer—a family member's, a friend's, or perhaps your own. The goal of Fox Chase is to save lives and reduce the suffering caused by cancer.

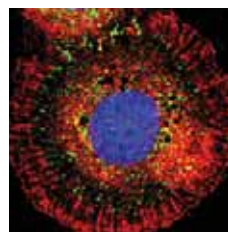


A shared passion

Everyone at Fox Chase—from our pioneering scientists to our expert doctors and nurses—shares a passion for helping people with cancer. Their efforts are needed now more than ever: Cancer is on pace to become the leading cause of death worldwide by 2010. But there is also great cause for hope. More people are surviving cancer because of advances in treatment, screening, and prevention, and Fox Chase is working to further that progress.

Fighting cancer is all we do

At Fox Chase, fighting cancer is all we do—all day, every day. Fox Chase is the only academic medical center in the Philadelphia region devoted entirely to cancer. By making cancer our exclusive focus, we can offer highly specialized expertise in research, treatment, and prevention not available at other institutions.



A comprehensive approach

Fox Chase is a National Cancer Institute-designated comprehensive cancer center. This prestigious designation recognizes excellence in both research and clinical care. It means that we pursue the full spectrum of science and medicine related to fighting cancer.

The Center integrates the work of our scientists and clinical staff to advance our understanding of cancer and offer the best care to patients. From new medical technologies to innovative surgical procedures to more effective chemotherapy options, our treatments are based on leading-edge research.

Personalized treatment

Fox Chase provides patients with comprehensive care, from risk assessment to diagnosis to meeting the unique needs of survivors. Our expert clinical staff develops a personalized treatment plan for each patient, and our doctors are national leaders in the use of innovative techniques such as minimally invasive surgery and the latest radiation therapy technologies.

Support at a difficult time

With every cancer diagnosis comes a flood of questions and emotions, from practical concerns about transportation to fears about prognosis. Our staff helps patients and their families navigate these concerns, from assisting with accommodations and billing questions to offering counseling, support groups, and spiritual guidance.

Growing to meet patient needs

Fox Chase is extending its services to more patients in the region and growing as a national leader in cancer treatment.

- *Expanded radiation services:* Fox Chase Cancer Center at Buckingham, slated to open in summer 2009 in Bucks County, Pennsylvania, will provide world-class radiation therapy to more patients outside Philadelphia.
- *A center of their own:* The Center for Women's Cancers will bring together leading oncologists in breast, ovarian, and other gynecological cancers to provide women with state-of-the-art care and support services. The center is scheduled to open in 2010.
- *The power of partnership:* Through the Fox Chase Cancer Center Partners program, the Center works with select community hospitals to help them provide the latest in cancer prevention, diagnosis, and treatment to people in their communities.



World-class research

Our nationally recognized scientists work tirelessly to further our understanding of cancer and develop new, lifesaving technologies that will improve treatment and prevention. Special research initiatives include the Keystone Programs for Collaborative Discovery, in which Fox Chase scientists and physicians team up to tackle key cancer problems. Keystone Programs include:

- Personalized Risk and Prevention
- Epigenetics and Progenitor Cells
- Blood Cell Development and Cancer
- Personalized Kidney Cancer Therapy

Groundbreaking clinical trials

Fox Chase faculty members design and lead clinical trials of many new drugs and other treatments. At any time, the Center has more than 225 trials under way that encompass the full range of cancer-related issues: prevention, detection, treatment, and survivorship. As a result, Fox Chase patients often have access to the latest lifesaving medical advances years before they become widely available.

Prevention and detection

Fox Chase is a national leader in cancer prevention and detection. Our pioneering Margaret Dyson Family Risk Assessment Program provides prevention and detection services to women with a family history of breast or ovarian cancer, and Fox Chase also offers risk assessment for melanoma and gastrointestinal and prostate cancers. Services include education, personal risk review, screening, and counseling about genetic testing.

Community outreach

The Center reaches into communities with education and awareness events and screenings. And our mobile mammography van, the only one of its kind in the Philadelphia region, travels to workplaces, community centers, and senior living communities to provide women with critically important mammograms.